

NARI - Madison Member Profile

Formecology, LLC
210 Cemetery Rd.
Evansville, WI 53536
608.882.6656
608.237.2499 (facsimile)
info@formecology.com
www.formecology.com

*“For a Landscape Design/Build Contractor, weather is not a conundrum.
Rain happens.”*

-John Gishnock III

“The Three Cs,” “communication, craft and consistency” describe Formecology, LLCs business model. A six-time Ace Award winner stationed in Evansville, WI, John Gishnock III and his company create landscaping with an eye towards sustainability using nature as the model.

A licensed Landscape Architect, John and Formecology’s design spirit follow that



of American Prairie landscape design pioneers, Jens Jensen and O. C. Simonds. "Nature has a way of managing itself," John says. And oftentimes, the most functional and harmonious projects are those which are self-sustaining and essentially “get out of Nature’s way.” This is “sustainable landscaping, which is here to stay and adaptable to any site.”

As a general contractor and companion landscaping business for general contractors, “we work hard to keep

our promises.” As part of that, Formecology, LLC stands behind its long warranty periods. Indeed, “the types of materials we use—such as natural stone—are lasting products which last generations. So our front-end quality work and back-end warranty commitments are commensurate with that.”

Openness and the knowledge of fellow NARI members are important to John and Formecology, LLC. Knowing that “it often takes a community to run a business,” John works hard to ask questions and listen to fellow NARI Members. He also works hard to reciprocate and be available to questions and requests for assistance from others. Such is the spirit of NARI-Madison!

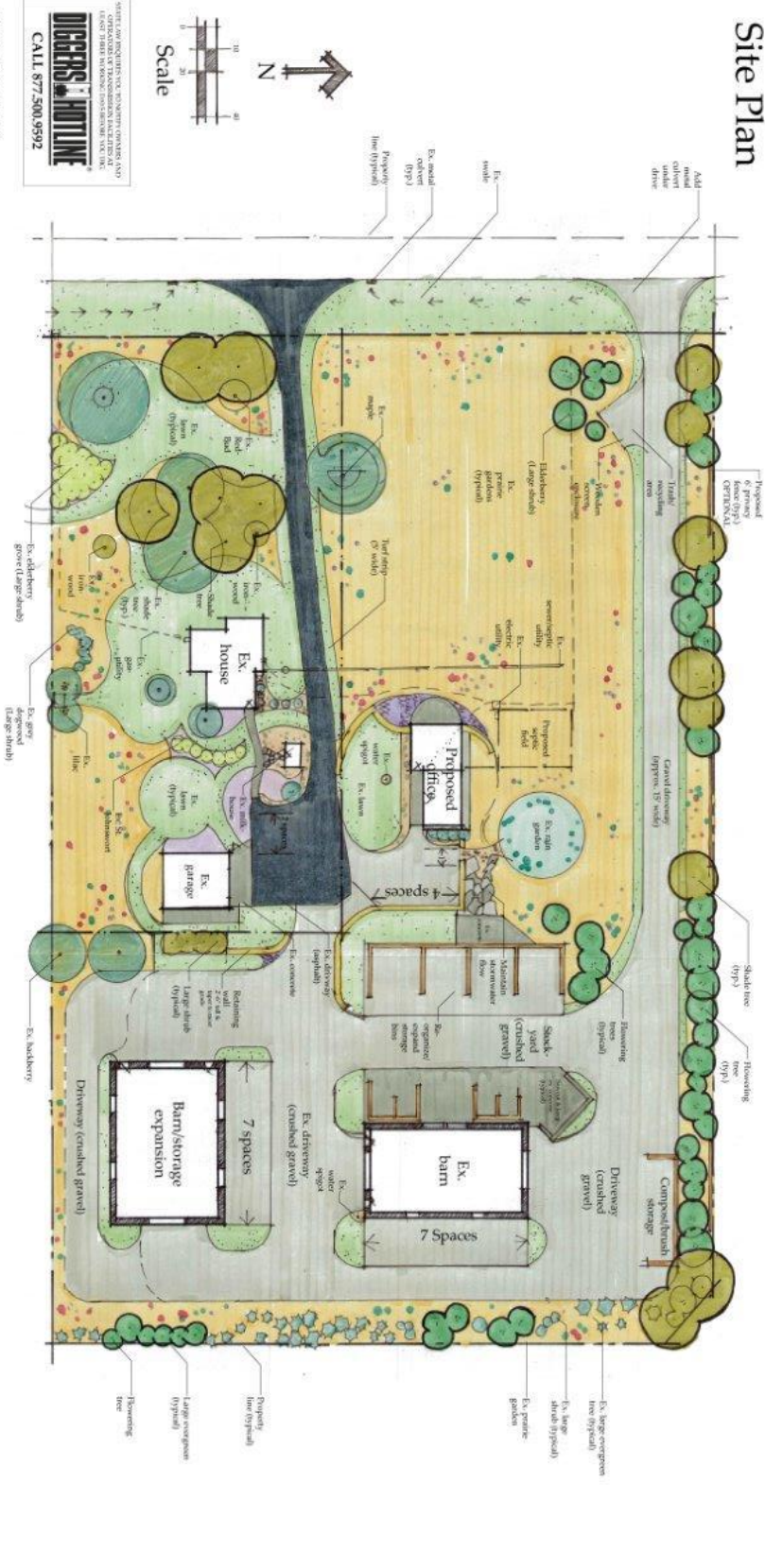


Fun Facts:

John planted his first tree when he was 17 (over 25 years ago!). Backpacking, playing cards with friends, and fantasy football are among his hobbies. John modestly adds that they have also been named Brava magazine’s Landscaper Of The Year. And keep an eye out for their new offices and grounds, which are in the works as we speak! (See the site plan on the next page).

Our sincere thanks to John and Formecology, LLC for their time and sharing with us!

Site Plan



WEBSITE: WWW.FORMECOLOGY.COM
 CONTACT: JOHN J. GISHNOCK III, P.L.A.
 PHONE: 608.882.6656 / 608.882.6657
 EMAIL: info@formecology.com
DIAGRAMS & HOTLINE
 CALL 877.500.9592

Formecology Office & Grounds Design

210 Cemetery Road, Evansville, WI 53536
 Conceptual Landscape Master Plan

Project #104-16
 5/22/18
 Drawn by John J. Gishnock III, P.L.A. & Formecology, LLC



landscape design / build / care
 210 Cemetery Road, Evansville, WI 53536 / formecology.com
 608.882.6656 / 608.882.6657 / info@formecology.com

Copyright © 2018 Formecology, LLC
 All rights reserved. No part of these plans
 or drawings may be reproduced or
 transmitted in any form or by any means
 without the prior written permission of
 Formecology, LLC. No portion of these
 drawings may be used for any other project
 without the written permission of
 Formecology, LLC.